

28⁺
YEARS
OF
EXCELLENCE



Auto Drain Valves

Solution for all needs

NEW | DIMENSIONS SOLUTIONS



ISO 9001:2015



ACCREDITED
Management System
Certification
MSCB-119



ISO 9001:2015 ISO 14001:2015 ISO 45001:2018
Cert. No.: 785966-754410-770689



UKAS
MANAGEMENT
SYSTEMS
8848



1282

Timer drain - Product Range:

Product Image							
Model – Analogue timer	SD 304 DS	SD 304 FS	SD 304 DU	SD 604 CQ	SD 3K4 CQ	SD 604 CR	SD 300 DT
Model – Digital timer	SDI 304 DS	SDI 304 FS	SDI 304 DU	SDI 604 CQ	SDI 3K4 CQ	SDI 604 CR	N/A
Quick selection guide	General purpose	High pressure	General purpose with ball valve cum strainer	High Discharge rate	Super high discharge rate	Near zero air loss for Air reservoir	Zero air loss for oil free compressed air system
Orifice, mm	4.5	2.0	3.5	12.5	25	12.5	2.5
Operating pressure, bar g	16	80	16	12	12	12	16
Max. Discharge capacity, lph	216	128	145	1797	4320	60	150
Rated discharge capacity, lph	53	32	36	231	557	24	47
After cooler / MS, cfm	550	330	370	2400	5775	250	For air receiver of capacity 500 litre and Drop legs.
Air receiver, liter	2000	1300	1500	10000	20000	1000	
Pre-filter, cfm	1925	1155	1295	6000	14425	625	
Refrigeration air dryer, cfm	1638	2425	1100	7125	17175	750	
Operation	Direct	Direct	Direct	Pilot	Pilot	Pilot	Float
Dimension, (WxDxH) mm	46x88x108	46x88x108	95x87x122	80x150x190	126x135x240	144x200x236	108x134x144
Weight, kg	0.45	0.46	0.540	0.630	2.4	2	0.650
Body material	Brass			Aluminium			
Seals	FKM			Nitrile			
Inlet size, BSPP(F)	1/2"	1/2"	1/2"BSPP(M) #	1/2"	1"	1/2"	1/2"@
Outlet size, BSPP(F)	1/2"	1/2"	1/2"	1/2"	1"	1/2"	1/2"
Power, watts	20	20	20	8	8	8	0
Electrical connection	DIN 43650-A						NA
Ingress protection	IP65						NA
On time, seconds	0.5 to 10						NA
Off time, minutes	0.5 to 45						NA
Operating temperature, °C	5 to 60						5 to 180

Note:

- > Except SD 304 FS, all drain valves are rated at 7 bar(g). SD 304 FS is rated at 40 bar(g).
- > For pressure other than 7 bar(g), multiply the discharge capacity given for 7 bar(g) by $0.378 \cdot \sqrt{P}$.
- > For SD 304 FS, pressure other than 40 bar(g), multiply the discharge capacity given for 40 bar(g) by $0.158 \cdot \sqrt{P}$.
- > For direct operated valve, the rated discharge capacity is based on 4 seconds On and 1 minute Off.
- > For pilot operated valve, the rated discharge capacity is based on 2 seconds On and 1 minute Off.
- > Drain valve SD 604 CR is rated based on 10 seconds On & 50 seconds Off.
- > Maximum discharge capacity is based on 10 seconds On and 30 seconds Off.
- > Pilot port size: 1/8" BSPP(F); Pilot air pressure: 4 to 10 bar(g).
- > # SD 304 DU has inlet port size of both 1/2" BSPP(M) and 1/4" BSPP(F).
- > @ Package of SD 300 DT has one 1/2" brass male nipple to facilitate installation where necessary.



Features of Digital Timer:

- > Modes of Operation
 - Open at starting
 - Close at starting
 - One cycle mode
- > 4-digit LCD display
- > Green numerals for On-time
- > Red numerals for Off-time
- > On-time range: 1 second to 99 hrs, 59 minutes & 59 seconds
- > Off-time range: 1 second to 99 hrs, 59 minutes & 59 seconds
- > Shock proof to 100m/s², 3 times each in 3 axes and 6 directions

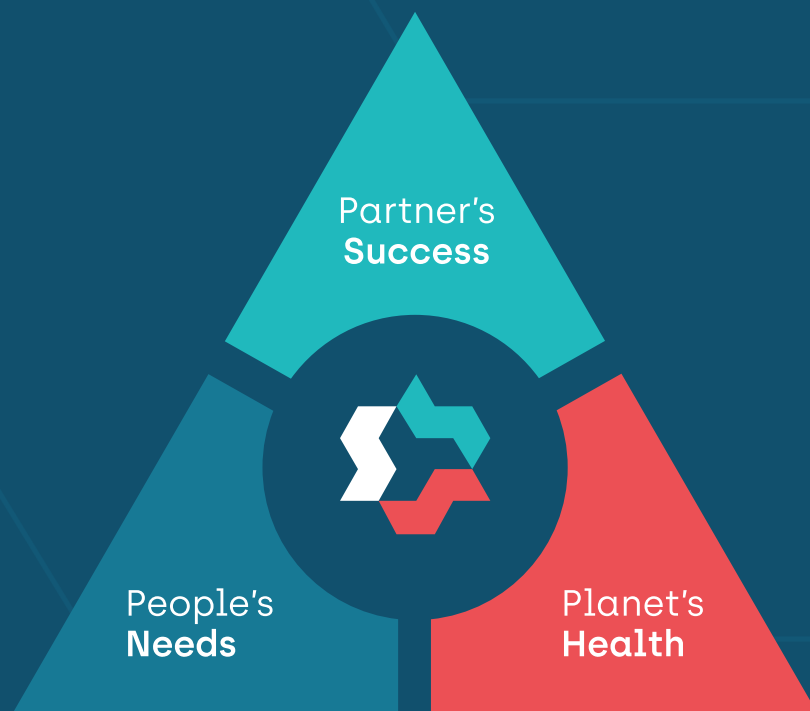
Model variants:

##	##	#	#	#
Product series	Capacity grouping number	Operating voltage	Maximum operating pressure	Valve Type
SD: Summits drain valve with Analogue timer	30	0: Mechanical float type	C: 12 bar(g)	S: Direct operated
	60	1: 24V DC	D: 16 bar(g)	Q: Pilot operated
SDI: Summits drain valve with Digital timer	3K	2: 110V DC	E: 40 bar(g)	R: Pilot operated + Energy saving
		3: 110V AC	F: 70/80 bar(g)	T: Float operated
		4: 230V AC		

Nomenclature:

- > e.g.: SD 304 DS
- > SD: Product Series, Analogue timer
- > 30: Capacity grouping number
- > 4: Operating voltage, 230V AC
- > D: Maximum operating pressure, 16 bar(g)
- > S: Valve type, Direct operated

Harvesting the elements of air through innovation for



Manufactured and marketed by

 **Summits Hygronics Private Limited**

SF.192 Earithottam, Kannampalayam,
Coimbatore - 641402. Tamilnadu, India.
P: +91 95009 96000

 enq@summitsgroup.in  www.airdryer.in

**Nearest Channel Partner /
Business Associate**